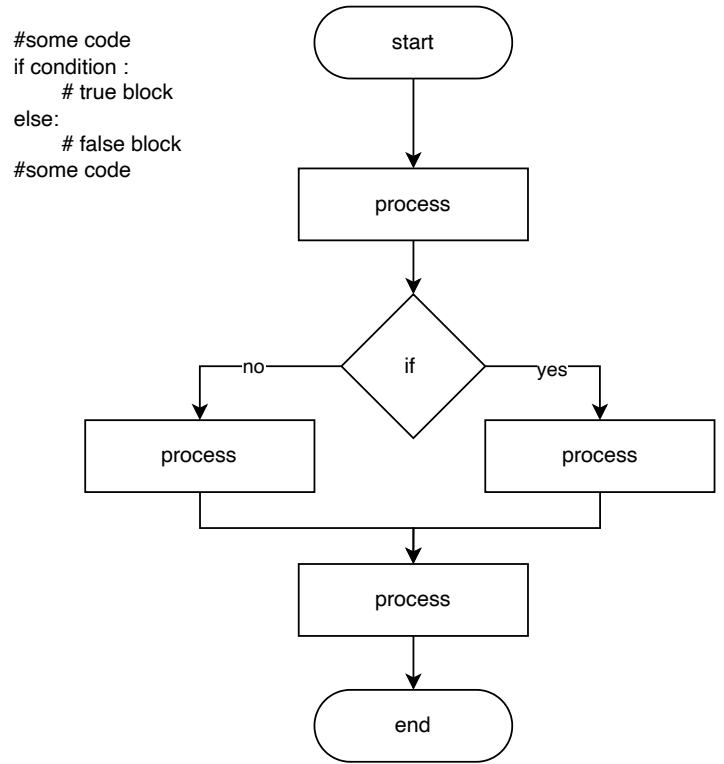
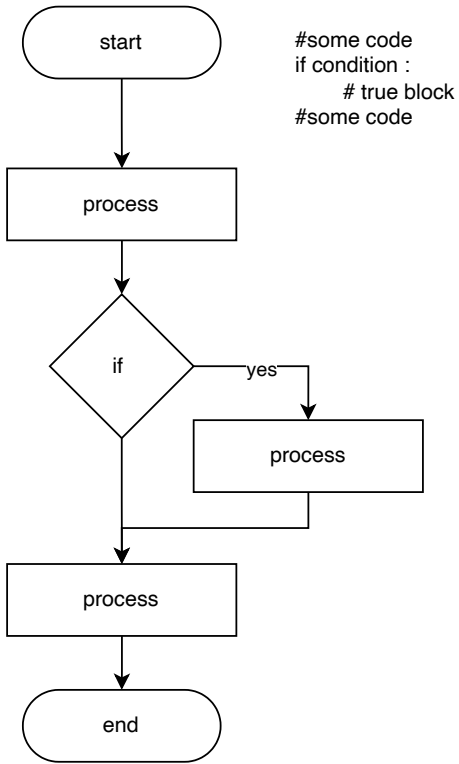
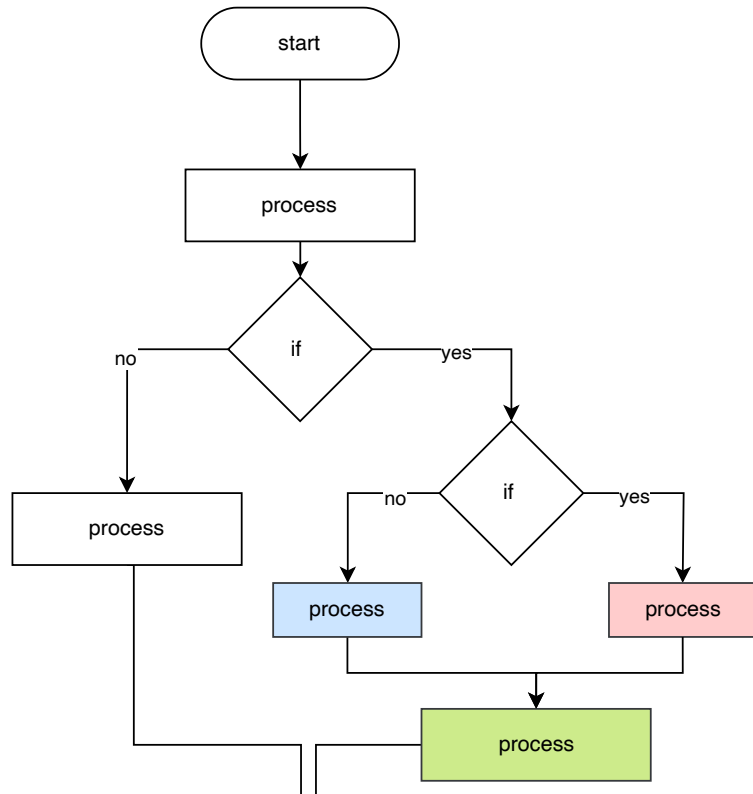


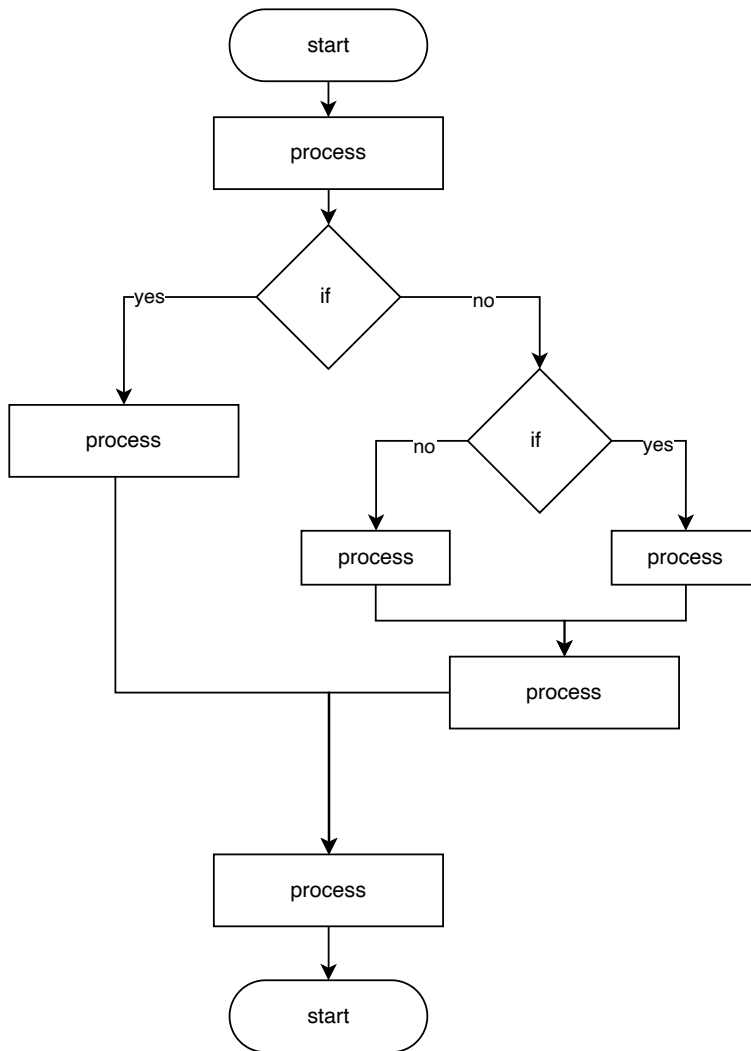
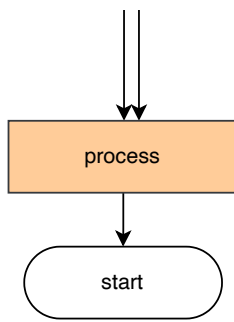
if - match case- list - tuple - set

flow chart



```
# some code  
if condition :  
    if condition:  
        # true block  
    else:  
        # false block  
        print('hello')  
else:  
    # false block  
    # some code
```

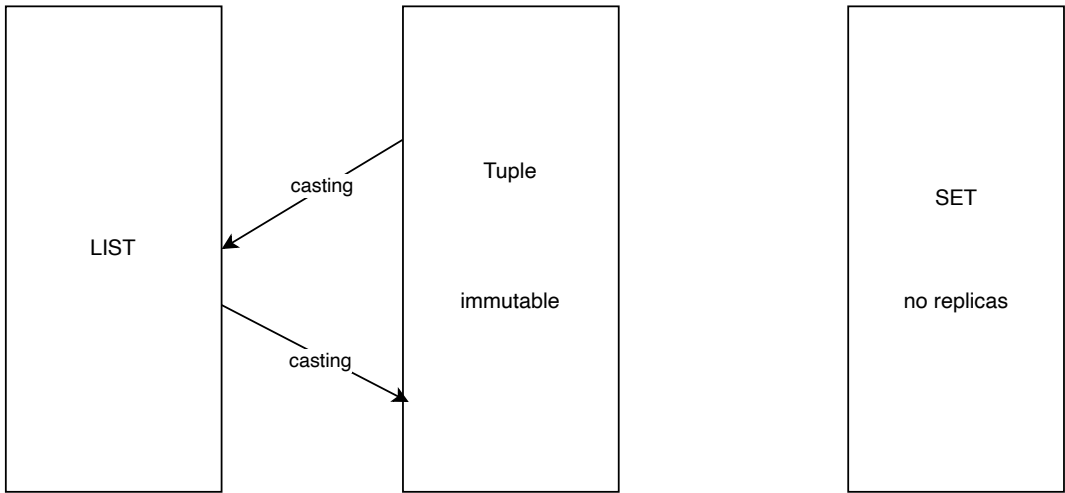
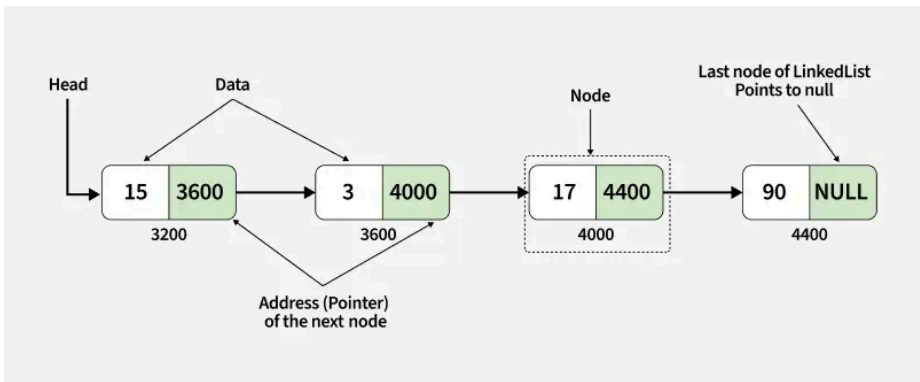
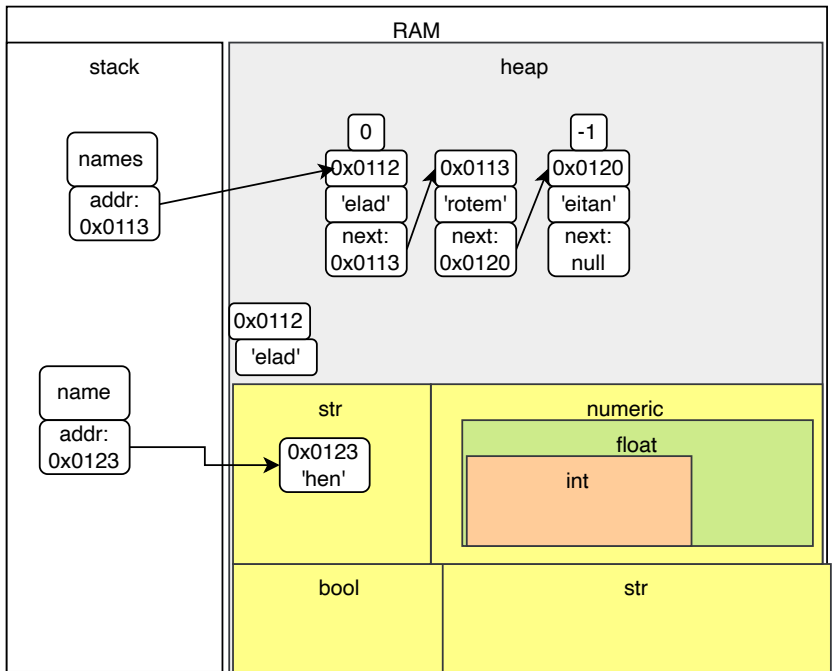


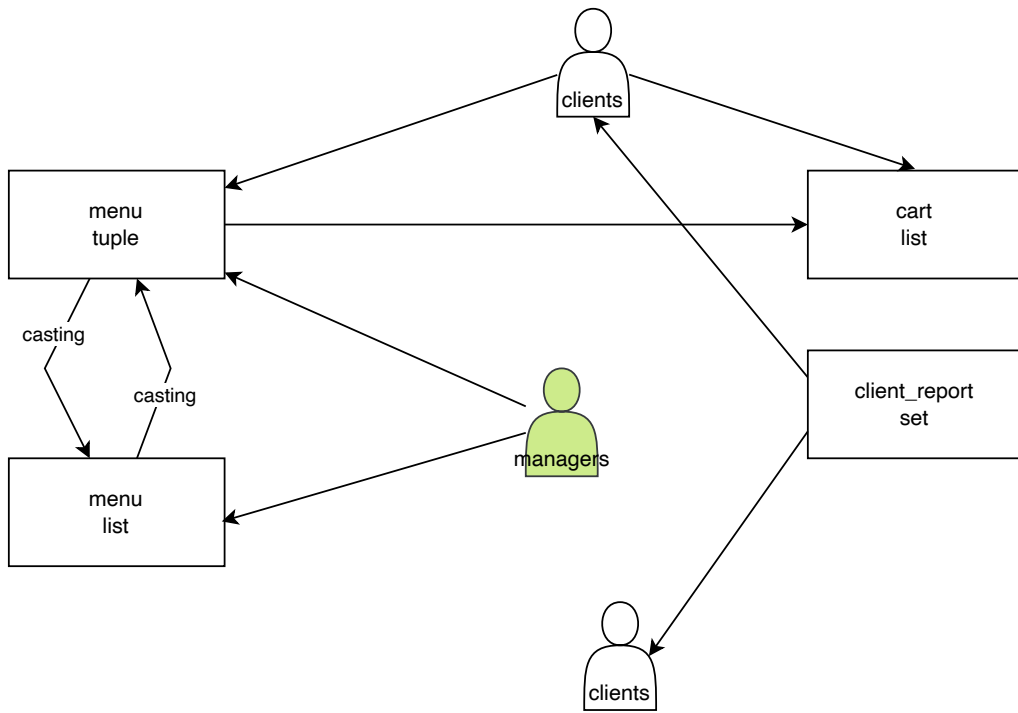


collections

```
names = ['elad','rotem','eitan']
l1= [123,'abu dhabi',[1,2,3]]
```

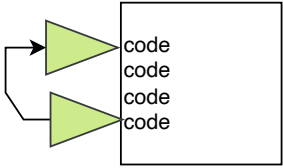
```
names[0]
names[2]
```





loop

```
x = 18
if x > 70 :
    x = x / 2
    print(x)
```



while

while loop

used when we dont know how many iteration it will take to meet the condition

condition

login attempt
3 failed attempts ->
locked account

for

for loop

used when known number of iterations

str
list
tuple
set
range

```
name = 'sahar'
```

```
for c in name :  
    print(c)
```

for

collection , str , range

